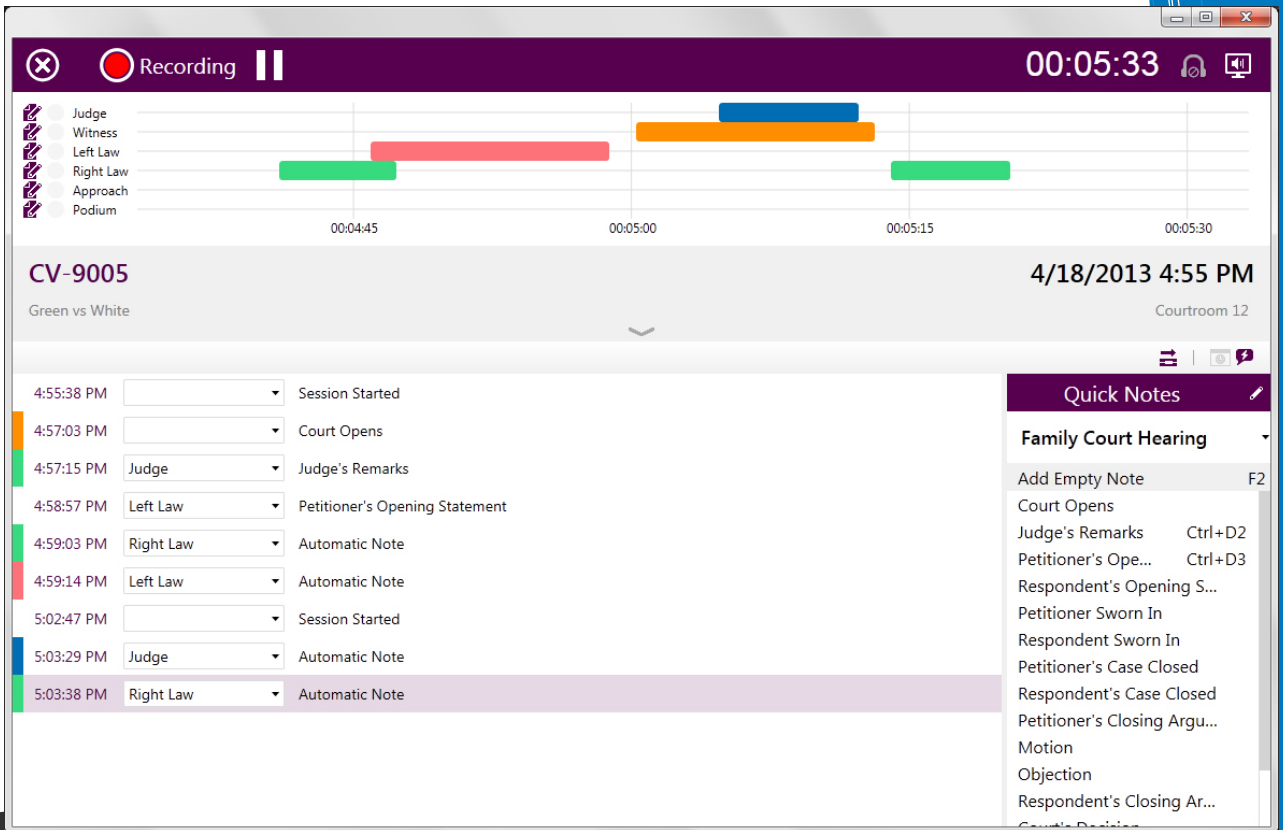




notewise

digital recording software



The screenshot displays the Notewise software interface. At the top, a purple status bar shows 'Recording' with a pause icon and a timer at '00:05:33'. Below this is a 'Speech Timeline' with a grid showing colored bars for different participants: Judge (blue), Witness (orange), Left Law (red), Right Law (green), Approach (purple), and Podium (grey). The timeline spans from 00:04:45 to 00:05:30.

Below the timeline, the case information is displayed: 'CV-9005' and '4/18/2013 4:55 PM'. The case name is 'Green vs White' and the location is 'Courtroom 12'.

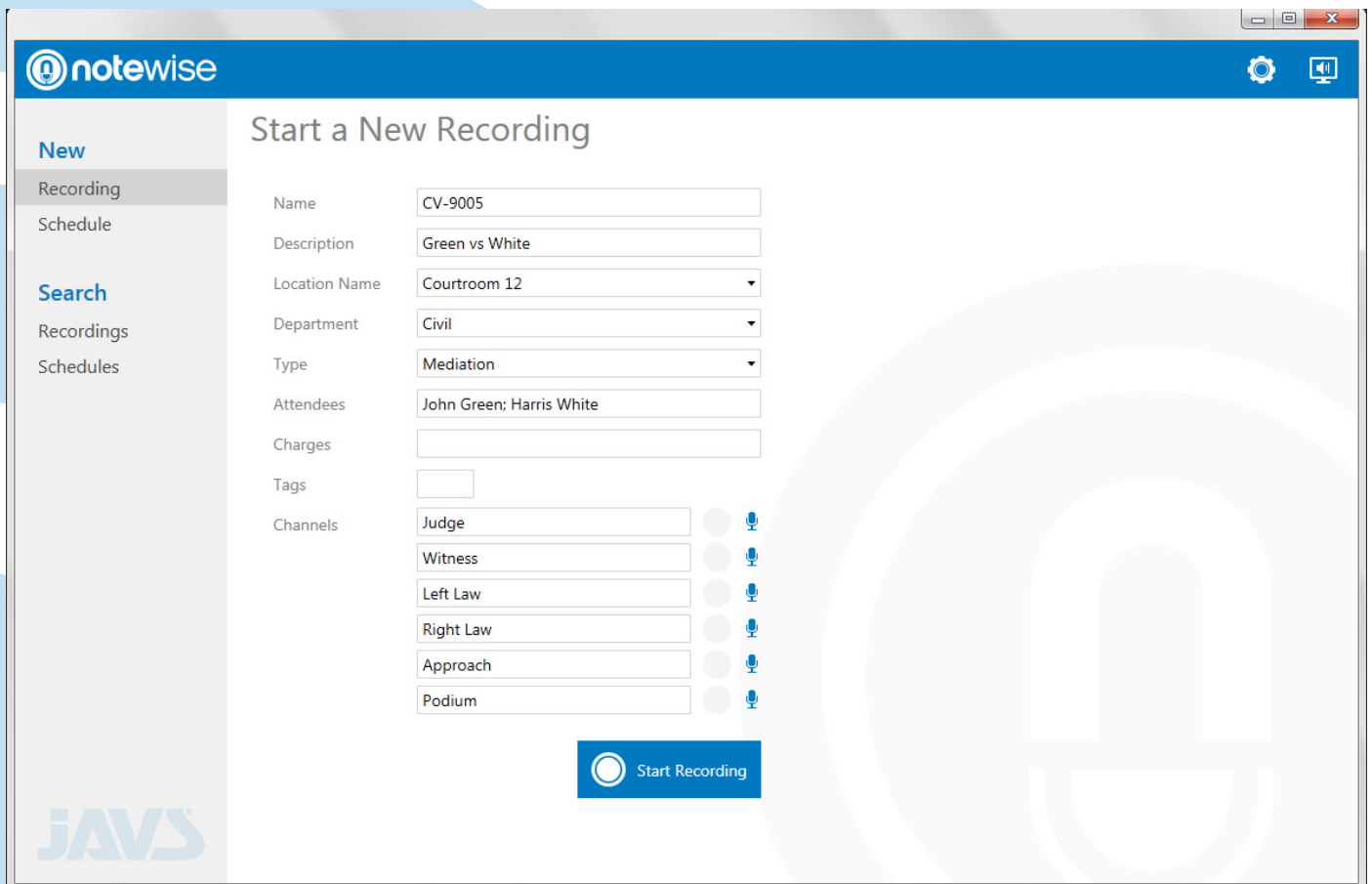
The main area shows a list of notes with timestamps and speaker information:

Time	Speaker	Note
4:55:38 PM		Session Started
4:57:03 PM		Court Opens
4:57:15 PM	Judge	Judge's Remarks
4:58:57 PM	Left Law	Petitioner's Opening Statement
4:59:03 PM	Right Law	Automatic Note
4:59:14 PM	Left Law	Automatic Note
5:02:47 PM		Session Started
5:03:29 PM	Judge	Automatic Note
5:03:38 PM	Right Law	Automatic Note

On the right side, there is a 'Quick Notes' panel titled 'Family Court Hearing' with a list of notes and keyboard shortcuts:

- Add Empty Note (F2)
- Court Opens
- Judge's Remarks (Ctrl+D2)
- Petitioner's Ope... (Ctrl+D3)
- Respondent's Opening S...
- Petitioner Sworn In
- Respondent Sworn In
- Petitioner's Case Closed
- Respondent's Case Closed
- Petitioner's Closing Argu...
- Motion
- Objection
- Respondent's Closing Ar...
- Court's Decision

Speech Timeline. Automatic Notes. Post-Logging. 12 tracks of audio. Any Windows Audio Device. Introducing the latest in audio recording innovation: JAVS NoteWise.



DIGITAL RECORDING

From the leaders in digital recording technology, JAVS NoteWise is the innovative new audio recording software solution for small meeting rooms, courtrooms, and portable deposition. Not only can NoteWise record up to 12 channels of audio from virtually any Windows compatible audio device, it gives you a visual indication of who is speaking using our new Speech Timeline. The Speech Timeline displays when a conversation started, when that conversation stopped, and what channel the conversation is recorded on. Users can then double click on any Speech Block in the Timeline to have the audio immediately begin playback from the start of that conversation.

In addition to a full-fledged note taking interface, NoteWise is the first product to ever create Automatic Notes based on who is speaking. By actively tracking microphone activity in the room, NoteWise

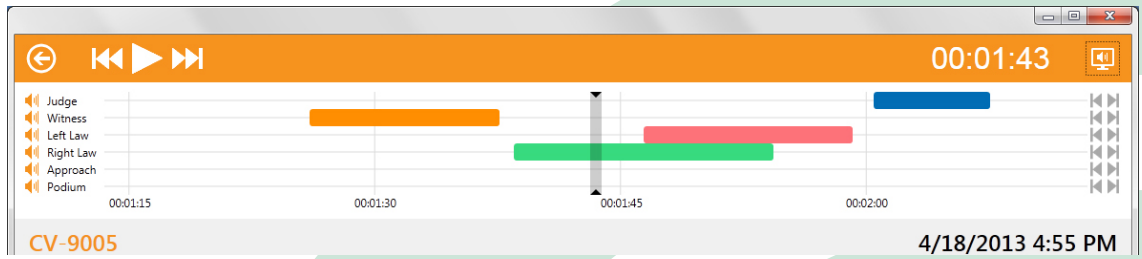
can make predefined entries in the log whenever a microphone becomes active. Once added to the log, the user can either edit or remove the entry with a click of the mouse. Post-Logging can even let users edit the log after recording has finished, complete with time stamping. The result is a natural, detailed log of events automatically generated by the software.

POST-LOGGING

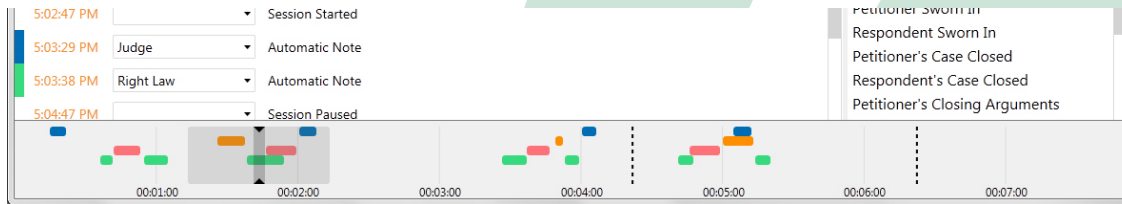
Not everyone can create detailed notes during a live recording. NoteWise gives you the ability to create notes after recording. During playback of any recording, simply Log like you normally would; NoteWise keeps track of where you are in the recording and creates your Notes with the proper timestamps. Easy.

SPEECH TIMELINE

Using our new Speech Blocks, the Speech Timeline gives you an intuitive view of a conversation, showing when each person in the conversation had something to say.



On the Playback Screen the Speech Timeline is expanded to include both the “magnified” view at the top of the screen and an “overall” view at the bottom of the screen. Skip buttons are included on the magnified view to let you jump from one block to the next with a simple click. Double-clicking on a block on the timeline will start an audio playback from the beginning of the block you selected. You can either drag the timeline backwards to select blocks that aren’t on the screen or use the zoom feature to see more of the timeline. An audio “scrubber” on the overall timeline lets you quickly scrub through audio to find a specific point to listen to.



AUTOMATIC NOTES

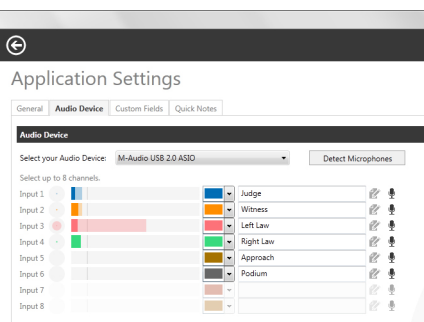
NoteWise can intelligently create Automatic Notes whenever conversations take place. Each microphone is monitored for activity; whenever a microphone registers above a certain threshold, NoteWise will put an entry in the log assigned to the corresponding input. Once added, you can quickly edit or delete the entry. You can even change the person speaking using the Speaker drop down box in the Log.

4:57:15 PM	Judge	Judge's Remarks
4:58:57 PM	Left Law	Petitioner's Opening Statement
4:59:03 PM	Right Law	Automatic Note
4:59:14 PM	Left Law	Automatic Note
5:02:47 PM		Session Started

CHOOSE HARDWARE THAT SUITS YOU

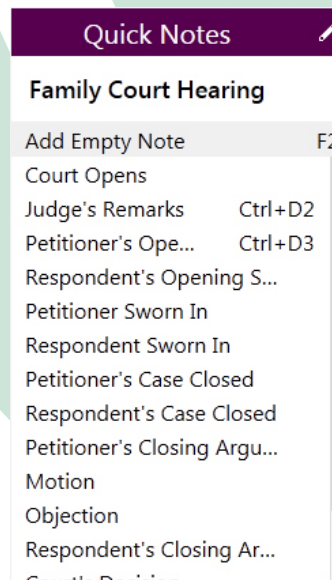
NoteWise supports any ASIO/WASAPI audio device, giving users freedom and flexibility in selecting the recording hardware that fits the needs of their environment. Configure microphones quickly and easily in Audio Device Setup with Microphone Detection in NoteWise. Up to 12 microphones may be enabled for

recording, given a label, and assigned a color. Each channel can also be configured to either automatically create an entry into the log or not.



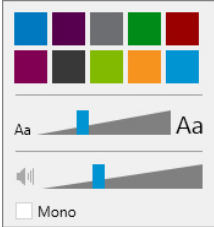
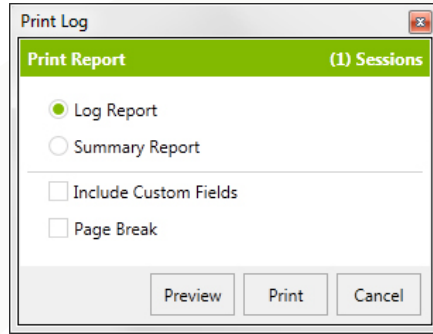
QUICK NOTES

Set up Quick Notes and assign them to specific keys for easy entry into the log during recording. Reuse lists of Quick Notes, and define different lists for each recording scenario.



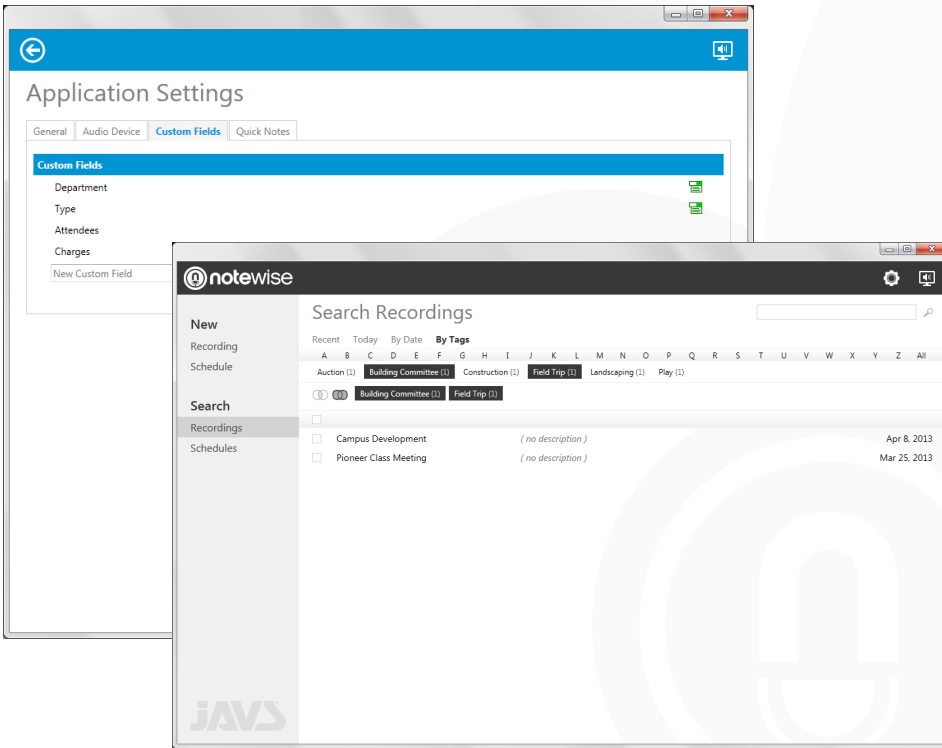
RELIABILITY, BACKUP, AND REPORTING

Confidence monitoring allows you to hear what has been recorded – while recording – just seconds after it has written to the file. A secondary recording path allows the user to configure a redundant location for recordings—even to a location on the local network. Export recordings and logs, as well as produce a PDF report. The user can select the location to where this export is made.



PERSONALIZATION AND ACCESSIBILITY

Choose your favorite theme color from up to ten, color-blind tested colors. A single slider quickly resizes the entire interface to the size most comfortable for you. Normal stereo playback puts all odd-numbered channels into the left speaker, and all even-numbered channels into the right speaker, or select the Mono checkbox to mix all channels into both the left and right channels.



CUSTOM INFORMATION

Search recordings and schedules using custom tags. Start a new recording based on one with similar details. For new recordings, choose from tags you've used before using the NoteWise auto-complete feature, or enter new tags. Easily locate all the recordings featuring a certain speaker or topic. For more permanent types of information, create a custom field as either a generic text field or a drop-down list.

SYSTEM REQUIREMENTS

Processor: Intel Core 2 Duo 2.2 GHz or higher
RAM: 2 GB minimum
Disk Space: 50 MB for installation
Audio Interface: Audio interfaces that have a native WASAPI driver for the edition of Microsoft Windows being used. Native ASIO drivers are required for recording more than 2 channels
Operating System: Windows 7 SP1 or newer (Windows 7 Starter is not supported)
Screen Resolution: 1024 x 768
USB: 2.0 or higher

RECORDING

Format: Ogg Vorbis (.ogg)
File Size: Stereo—15.1KB/s (54.5MB/hour)
4 channel—34.9KB/s (125.8MB/hour)
8 channel—69.6KB/s (250.4 MB/hour)



Jefferson Audio Video Systems, Inc.
13020 Middletown Industrial Blvd.
Louisville, KY 40223
800.354.JAVS